

IRO Training Grounds

Infosheet

When using the IRO Training Grounds, we ask you to observe and comply with the following points:

- 1. Vehicles** must be parked without exception in the designated parking lot (next to the main road L 1558).
- 2. Smoking** is prohibited on the entire training grounds (also at Area Search sites).
- 3. Dogs** must be kept on a leash on the entire training grounds, except for search and rescue dog work. Please do not tie the dogs to the fences.
- 4. Dog waste** is to be disposed of in the bins provided for this purpose.
- 5. Please leave the training grounds as you found them.**

Thank you for your understanding and we wish a successful training!

In case of questions and for further information on the IRO Training Grounds, please contact the IRO Office at office@iro-dogs.org or **+43 662 82 65 26**.

Directions

Ulrichsberg/Schöneben, Austria

Coordinates for Google Maps

[N 48.711771, E 13.951476](#)

From Salzburg, Graz or Vienna

via Linz

1. From Linz to Rohrbach (national road 127)
2. Approx. 5 km after Rohrbach towards Aigen and further on to Ulrichsberg
3. 50 m after entering Ulrichsberg turn right in direction of Lichtenberg
4. After Lichtenberg 5 km uphill until you reach Schöneben
5. Straight ahead in Schöneben until you reach Wiesmadern (club house)
6. Parking space left of the road

From Germany

via Passau

1. From Passau to Hauzenberg
2. From Hauzenberg to Breitenberg
3. In Breitenberg head to Aigen then to Ulrichsberg
4. 50 m after entering Ulrichsberg turn right in direction of Lichtenberg
5. After Lichtenberg 5 km uphill until you reach Schöneben
6. Straight ahead in Schöneben until you reach Wiesmadern (club house)
7. Parking space left of the road

Accommodation and campsites

Campsites

Naturflussbad Große Mühl

(approx. 5 km away)

4161 Ulrichsberg

T +43 7288 7046

[Email](#)

Böhmerwaldcamp Klaffer am

Hochficht

8 km to Schöneben

[Website](#)

Mühlfunviertel in Klaffer am

Hochficht

8 km to Schöneben

[Website](#)

Accommodation in Ulrichsberg (B = Breakfast, HF = Holiday Flat)

Bio-Bauernhof Natschläger (with B.)

Stollnberg 16

T +43 7288 27040

[Email](#)

[Website](#)

Ferienhof Streicher

(B. on request)

Lichtenberg 39

T +43 7288 2358

[Email](#)

[Website](#)

HF Mariandl (no B.)

Hintenberg 80

T +43 7288 8324

[Email](#)

Bauernhof Hable (with B.)

Lichtenberg 25

T +43 7288 6137

[Email](#)

INNs HOLZ Chaletdorf

Böhmerwald (with B.)

Schöneben 10

T +43 7288 70600

[Email](#)

[Website](#)

HF Märzinger (no B.)

Mühlwald 1

T +43 660 774 85 98

[Email](#)

Bauernhof Krenn (no B.)

Stangl 1

T +43 7288 27314

[Email](#)

INNs HOLZ Natur- &

Vitalhotel**** (with B.)

Schöneben 10

T +43 7288 70600

[Email](#)

[Website](#)

HF Schuster (no B.)

Kandlschlag 3

T +43 7288 2669

[Email](#)

Bauernhof Streiahof (no B.)

Hintenberg 19

T +43 664 9911014

[Email](#)

[Website](#)

Böhmerwaldhorst (Cottage)

Schöneben 10

T +43 7288 70 600 15

[Email](#)

[Website](#)

Biobauernhof Gollner (with B.)

Lichtenberg 10

T +43 7288 2024

[Email](#)

[Website](#)

Hötzi-Haus (no B.)

Lichtenberg 56

[Email](#)

[Website](#)

Frühstückspension Pfoser

(with B.)

Berdetschlag 39

T +43 7288 6559

[Email](#)

[Website](#)

Bioziegenhof Pröll (no B.)

Lichtenberg 93

T +43 7288 6475

[Email](#)

HF Christine Gierlinger (no B.)

Lichtenberg 105

T +43 7288 6449

[Email](#)

[Website](#)

Pension Bogner (with B.)

Hintenberg 58

T +43 699 10 79 50 14

[Email](#)

Accommodation and campsites

Accommodation in Aigen-Schlägl (B = Breakfast, HF = Holiday Flat)

Biohof Veit (no B.)

Kirchengasse 9
T +43 7281 6538

[Email](#)

[Website](#)

Privatzimmer Ida Blaschek (no B.)

Krumauer Straße 28a
T +43 7281 8290

[Email](#)

Apartmenthaus Kern –

Westernreithof „Big Mill“ (no B.)

Mühltal 1
T +43 699 121 652 14

[Email](#)

[Website](#)

Appartpension Kurt Kraml (no B.)

Hauptstraße 2
T +43 7281 6218

[Email](#)

HF Christine Leitner (no B.)

Berghäusl 35
T +43 7281 6394

[Email](#)

HF Margit Gruber (B. on request)

Schachlingstraße 18
T +43 7281 8404

[Email](#)

Pension Fuchs (with B.)

Diendorf 15
T +43 7281 8000

[Email](#)

Biergasthaus Schiffner (with B.)

Linzer Straße 9
T +43 7281 8888

[Email](#)

[Website](#)

Bärsteinhof Kräuterhotel

(with B.)
Marktplatz 12
T +43 7281 6245

[Email](#)

[Website](#)

Almesberger Wellnessresort

(with B.)
Marktplatz 4
T +43 7281 8713

[Email](#)

[Website](#)

Landhotel Haagerhof

(with B.)
Diendorf 20
T +43 7281 638 80

[Email](#)

[Website](#)

Pension Ernestine Gierlinger

(with B.)
Paul-Jauker-Straße 7
T +43 7281 63 83

[Email](#)

Accommodation in Klaffer am Hochficht (B = Breakfast, HF = Holiday Flat)

Sonnleitnerhof (with B.)

Kräuterdorfstraße 2
T +43 664 32 12 173

[Email](#)

[Website](#)

Hotel-Pension Hochficht (with B.)

Dorfplatz 5
T +43 7288 6507

[Email](#)

[Website](#)

Forsthaus am Hochficht

Holzschlag 13
T +43 7288 6512

[Email](#)

[Website](#)

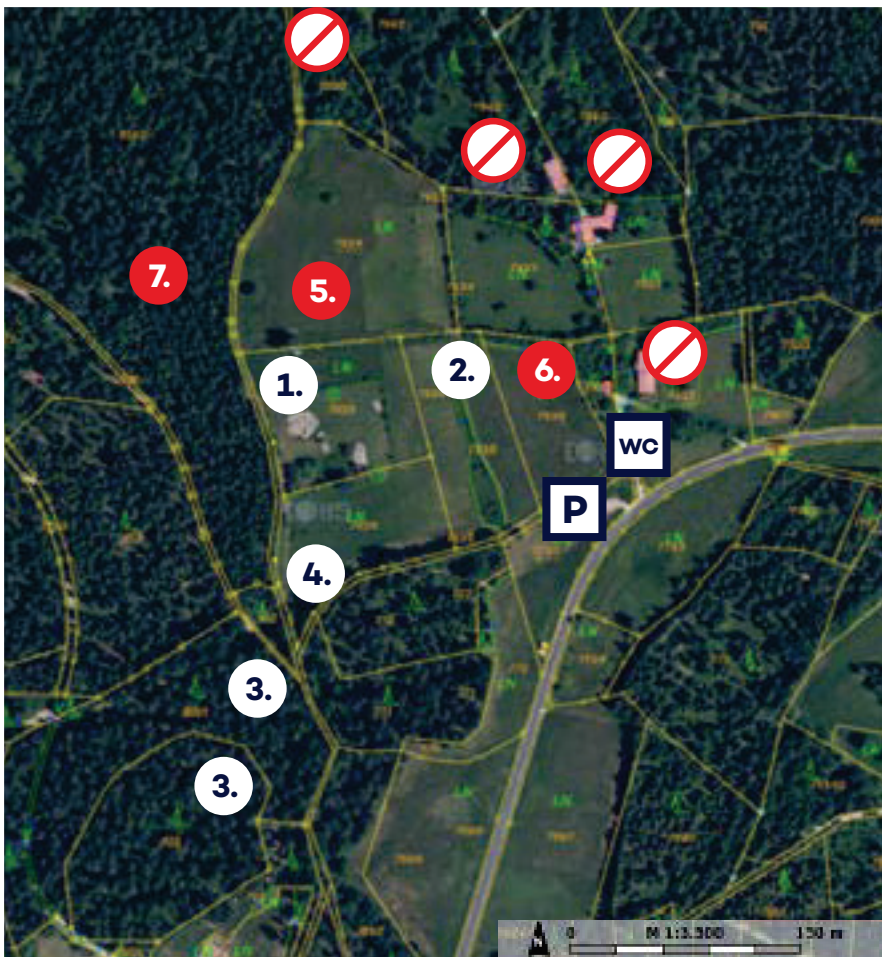
Ferienhaus Winkler (no B.)

Lusweg 1
T +49 7621 16 30 818

[Email](#)

[Website](#)

Overview plan



Areas available for use

1. IRO Rubble Site

Property No. 793/5

2. Grassland with obstacles

(Dexterity)

Property No. 793/8

3. Area terrain with rocks

Property No. 856/1 and 855

4. Grassland

Property No. 793/6

May be occasionally occupied by the training week Wiesmadern.

5. Grassland

Property No. 851/2

Use only when mown

6. Grassland

Property No. 793/4

Use only when mown

7. Forest

Property No. 793/9

Use only from April to October

Parking & toilets

Property No. 773/1

(municipality)

Not for use

Property No. 793/2

Property No. 794/2

Property No. 794/3

Property No. 795/2